

Accessories

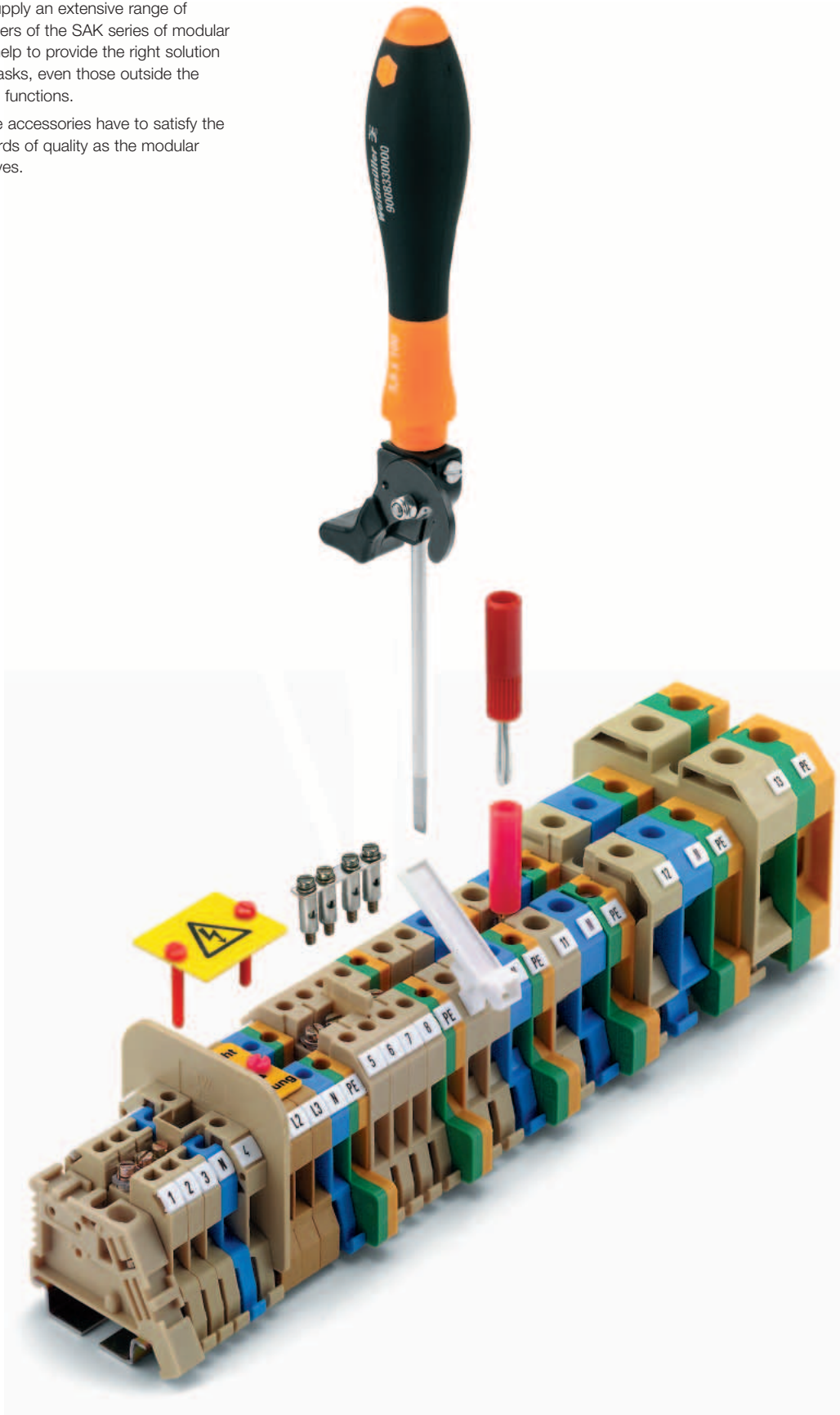
Overview	I.2	- I.3
Visual separation – side covers	I.4	- I.5
Colour coding options	I.6	- I.7
Potential distribution	I.8	- I.13
Testing/Checking	I.14	- I.15
Protective covers	I.16	- I.18
Accessories for modular disconnect test terminals	I.20	- I.21

Overview

The extra functions

Weidmüller can supply an extensive range of accessories for users of the SAK series of modular terminals. These help to provide the right solution for all manner of tasks, even those outside the scope of standard functions.

And of course, the accessories have to satisfy the same high standards of quality as the modular terminals themselves.



Overview

Visual separation – side covers

page I.4



To guarantee protection against fingers coming into contact with live parts when working with modular terminals, open sides are blocked off with end cover plates and partition plates.

But in addition, end cover plates and partition plates are available in various colours and so can be used to create a visual distinction between different circuits.

Colour coding options

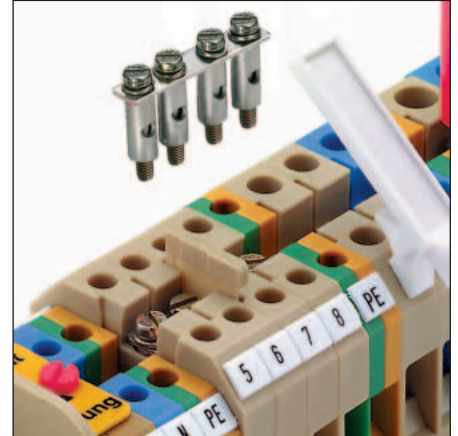
page I.6



Another helpful feature of the accessories for modular terminals with screw connections are the different colours available.

Potential distribution

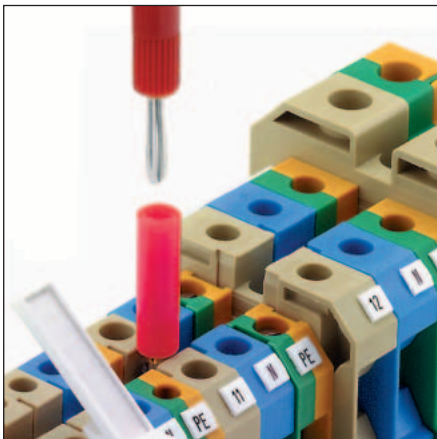
page I.8



Some 60% of all modular terminals are cross-connected. Weidmüller can supply a wide range of solutions.

Testing / Checking

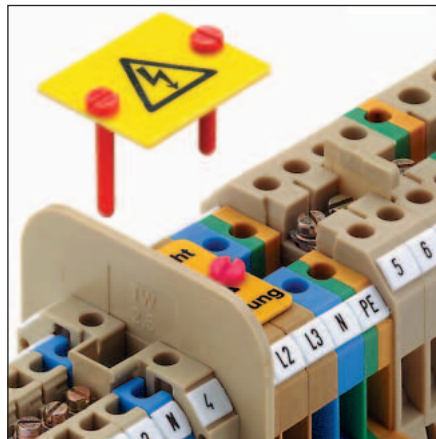
page I.14



Weidmüller test plugs and sockets guarantee that the necessary tests can be carried out on the installation.

Protective covers

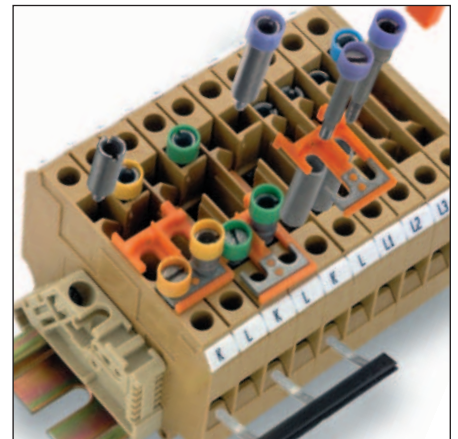
page I.16



Electrical installations must be safe at all times. Therefore, Weidmüller can supply a large range of protective cover strips and plates, plus labelling systems.

Accessories for modular disconnect test terminals

page I.20

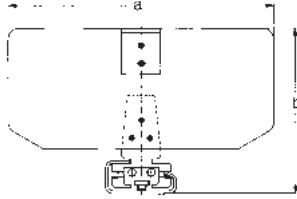


Special applications call for special solutions.

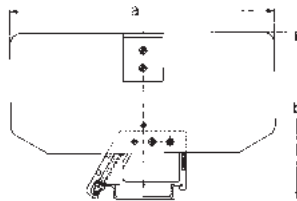
Visual separation – side covers

End clamp plates

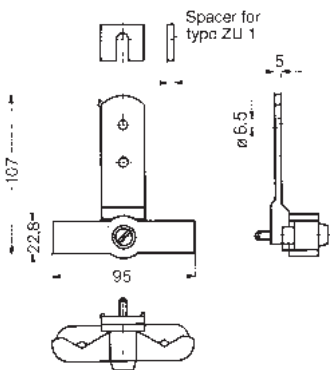
End clamp plate with mounting bracket EP ... /32



End clamp plate with mounting bracket EP ... /35



Strain relief clip



Strain relief clip for gripping cables up to 30 mm dia. Attach the strain relief clip between TS and mounting surface using the TS fixing screw. Fit the spacer to suit with the second fixing screw.

EP end clamp plates

Type	a	b	Order No.	for terminal type:
EP 1	120	75.5	0271800000	SAKG 28 and SAKG 70
EP 2	160	90.5	0271900000	SAKG 32, 40, 46 and 54
EP 1/35	120	76.5	1381600000	SAKG 32 and SAKG 70
EP 2/35	160	91.5	0182000000	SAKG 32, 40, 46 and 54

ZU 1

Material	Qty	Order No.
ZU 1	2	0240600000

Colour coding options

End cover plates



Protection against contact with live parts

Apart from a few exceptions, the last terminal of a terminal strip must be covered with an AP end cover plate. And end cover plates are also required within a terminal strip containing terminals of different sizes.

This guarantees protection against contact with live parts. The modular terminals are finger-touch safe (to DIN VDE 0106-100).

Visual separation

Coloured end cover plates are frequently used to create a visual distinction between different circuits.

Guaranteeing the operating voltage

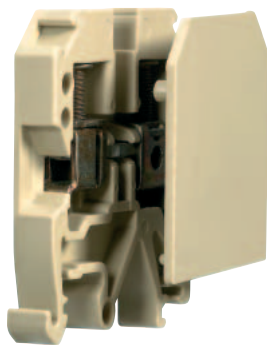
End cover plates can also be used to maintain the necessary clearance and creepage values and thus guarantee the operating voltage for the application. For example, if cross-connection sets are positioned directly adjacent one another.

Matching profiles

The overall dimensions of the end cover plates match the sizes of the associated terminals.

Installation

Spigots on the end cover plate enable it to be simply clipped into the corresponding modular terminal. The matching holes in the modular terminal ensure that the end cover plate is positioned exactly to match the profile of the terminal.



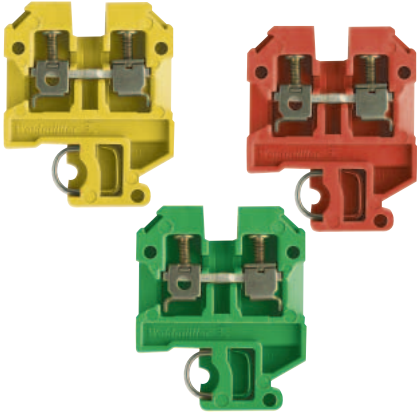
Visual separation – side covers

Type	Colour	Qty	Order No.
AP SAK4-10 DB	dark beige	20	0105100000
AP SAK4-10 OR	orange	20	0105160000
AP ASK1 OR	orange	20	0105360000
AP DKT4 PA	beige	20	0687560000
AP AKZ2.5K	beige	50	0697260000
AP AKZ2.5	beige	50	0697360000
AP DKIT4	beige	20	0635060000
AP SAK4-10 RT	red	20	0117900000
AP SAK4-10 KRG/BL	blue	20	0117970000
AP SAK4-10 BL	blue	20	0117980000
AP SAKH 4EX	black	20	0408730000
AP SAKH6-10 EP/SW	black	20	0131700000
AP DUSA4/35	beige	20	0401360000
AP SAKB/C/T BE	beige	20	0146760000
AP SAKD2.5N BL	blue	20	0150980000
AP AKA2.5 KRG/BL	blue	50	0162570000
AP SAK4-10 KRG/DB	dark beige	20	0177600000
AP SAKS1+3 KRG/DB	dark beige	20	0191300000
AP SAKR BE	beige	20	0211360000
AP 70 SAK70 KRG	dark beige	10	0340920000
AP SAKR BL	blue	20	0211380000
AP AKZ1.5	beige	50	0340560000
AP SAK70/35	beige	10	0340960000
AP AST1+5 DB	dark beige	20	0266400000
AP ASK1	beige	20	0380360000
AP SAK16 BL	blue	20	0271180000
AP DK4	beige	20	0359260000
AP SAK2.5 GE	yellow	20	0279500000
AP SAK2.5 OR	orange	20	0279540000
AP SAK2.5 KRG BL	blue	20	0279570000
AP SAK2.5 BL	blue	20	0279580000
AP AKZ4 BL	blue	20	0294480000
AP SAK95 KRG	blue	10	0550920000
AP DSK1.5	beige	20	0532960000
AP SAK35 KRG/BL	blue	10	0303670000
AP DK4S	beige	20	0631360000
AP SAK35/TW SAK16 BL	blue	10	0303680000
AP SAK2.5L KRG BL	blue	20	0309270000
AP ADK1	beige	50	0476260000
AP AKZ1.5 BL	blue	50	0340580000
AP SAK2.5/35 + AST3+4	beige	20	0460560000
AP TOP4SF-FF	beige	20	0483460000
AP DK4 BL	blue	20	0359280000
AP ASK1 RT	red	20	0380350000
AP ASK1 BL	blue	20	0380380000
AP DLD2.5/PE	beige	20	1595960000
AP VLI1.5/PE	beige	20	1633320000
AP VLI1.5	beige	20	1633260000
AP MAK2.5	beige	20	1615280000
AP DK4Q	beige	20	1397160000
AP DLI2.5	beige	20	1313260000
AP DLD2.5	beige	20	1317660000
AP ST5 PPO/SW	black	10	0447240000
AP ST5 PA/BE	beige	10	0447260000
AP SAK2.5/35 DB	dark beige	20	0460490000
AP TW/SS.../35	beige	10	1333200000
AP SAK2.5/35 BL	blue	20	0460580000
AP SAKS1+3 KRG	dark beige	20	0191320000
AP SAKD2.5N	beige	20	0150960000
AP SAKR KRG	dark beige	20	0211320000
AP TAL	beige	20	0212260000
AP SAKA KRG	dark beige	20	0134220000
AP SAK95 KRG/BL	blue	10	0550970000
AP SAKH6-10 KRG	dark beige	20	0131720000
AP SAKB/C/T KRG	dark beige	20	0146720000
AP AKA2.5	beige	100	0162520000
AP DK4Q DB	dark beige	20	0631300000
AP DK4S BL	blue	20	0631380000
AP AKZ4	blue	20	0294460000
AP AKZ4 KRG	dark beige	20	0294420000
AP SAK35/TW SAK16	beige	10	0303660000

Type	Colour	Qty	Order No.
AP SAK35 KRG	dark beige	10	0303620000
AP AKZ2.5 BL	blue	50	0697380000
AP RSF2 KRG	dark beige	10	0301420000
AP SAK2.5	beige	20	0279560000
AP SAK2.5 KRG	dark beige	20	0279520000
AP DLD2.5 BL	blue	20	1317680000
AP AKZ1.5W	beige	20	0329660000
AP SAKT2 KRG	dark beige	20	0329120000
AP AST3+4 KRG	dark beige	20	0298120000
AP DK4Q BL	blue	20	1397180000
AP SAK2.5L KRG	dark beige	20	0309220000
AP RSF3	beige	10	0270460000
AP RSF1 KRG	dark beige	10	0270420000
AP AST1+5 KRG	dark beige	20	0266420000
AP AST1+5	beige	20	0266460000
AP SAK16 KRG	dark beige	20	0271120000
AP SAKT4 KRG	dark beige	20	0244920000
AP SAK16	beige	20	0271160000
AP SAK4-10	beige	20	0117960000
AP SAK4-10 KRG	dark beige	20	0117920000
AP SAK4-10 I	beige	20	0117910000
AP ASK1 DB	dark beige	20	1753320000
AP 100 GR	grey	20	1773410000
AP DLI2.5 DB	dark beige	20	1783550000
AP DLD2.5/PE DB	dark beige	20	1783800000
AP VLI1.5 DB	dark beige	20	1784150000
AP VLI1.5/PE DB	dark beige	20	1784160000
AP DLD2.5 DB	dark beige	20	1784210000
AP 110 GR	grey	10	1790080000
AP SAKR BE RS-SET	beige	5	1820200000
AP SAK4-10 GR 7042	grey	20	1853970000
AP 2 DSG1.5T	beige	1	2119490000
AP PPT/35	black	10	3835120000
AP RV	beige	1	4145220000
AP OSC 10/16	beige	10	9154850000
AP OSC 4	beige	10	9154860000
AP STA2.5 0.5MM	beige	1	2012770000
AP KDKS1 1.5	beige	20	9503330000
AP KDKS1 EN	beige	20	9503340000
AP KSKM	beige	20	9509630000
AP SAK4-10 GE	yellow	1	2076890000
AP SAK16 GE	yellow	1	2076900000
AP SAK35/TW SAK16 GE	yellow	1	2076910000
AP AST3+4/35 GE	yellow	1	2077060000
AP AKZ4 GE	yellow	50	2077070000
AP SAK2.5/35	beige	1	2144900000
AP ATA1	beige	1	2093550000
AP SAK4 KRG M.FU	dark beige	20	0460020000
AP DK4/380 Q	beige	20	0438560000
AP SAKB/C/T BE	beige	1	4140450000
AP SAKB/C/T1 DB	dark beige	1	4173520000
AP MAK2.5 DB	dark beige	20	7917000000
AP SAKK4/10 KER/WS	white	10	9502630000
AP KDKS1 1.5 DB	dark beige	20	9532470000

Colour coding options

Colour coding options



The colours listed here are available as standard. Other types of terminals in custom colours can be supplied on request, provided a minimum quantity is ordered.

Type	Colour	Qty	Order No.
SAK 2.5 AL BLUE (E)	blue	100	6253140000
SAK 2.5 BL	blue	100	0279680000
SAK 2.5 BL RS-SET	blue	10	1817860000
SAK 2.5 KRG/BL	blue	100	0279670000
SAK 2.5 OR	orange	100	1326360000
SAK 2.5 SW 1X1	black	100	0108560000
SAK 2.5 SW 1X1/KRG	black	100	0108520000
SAK 2.5/35 BL	blue	100	0380480000
SAK 2.5/35 DBL	blue	100	1799920000
SAK 2.5/35 GE	yellow	100	1821480000
SAK 2.5/35 KRG/BL	blue	100	0380470000
SAK 2.5/35 OR	orange	100	0380440000
SAK 2.5/35 RT	red	100	1799910000
SAK 2.5/35 SW	black	100	1799900000
SAK 2.5/35 SW 1X1	black	100	0514060000
SAK 2.5/EN BL	blue	100	0218680000
SAK 2.5/EN BR	brown	100	1858450000
SAK 2.5/EN SW	black	100	1858440000
SAK 2.5/EN WS	white	100	1858460000
SAK 2.5/TC AL BL	blue	100	0107180000
SAK 2.5/TC CH BL	blue	100	0107280000
SAK 35/35 BL	blue	20	0380780000
SAK 35/EN BL	blue	20	1784400000
SAK 4 BL	blue	100	0128380000
SAK 4 BL RS-SET	blue	10	1817780000
SAK 4 EP/SW	black	100	0128300000
SAK 4 KRG BL	blue	100	0128370000
SAK 4 OR	orange	100	0105060000
SAK 4 SS/35 6.3 GR	grey	100	0646930000
SAK 4/35 BL	blue	100	0443680000
SAK 4/35 KRG/BL	blue	100	0443670000
SAK 4/35 OR	orange	100	1323660000
SAK 4/35/AP GG	grn/yell	100	0443650000
SAK 4/EN BL	blue	100	0467480000
SAK 4/EN BR	brown	100	9130990000
SAK 4/EN GE	yellow	100	9129930000
SAK 4/EN GN	green	100	9129950000
SAK 4/EN GR	grey	100	9129960000
SAK 4/EN GR 7042	grey	100	1853950000
SAK 4/EN OR	orange	100	0467400000
SAK 4/EN RT	red	100	9129920000
SAK 4/EN SW	black	100	9130980000
SAK 4/EN WS	white	100	1773340000
SAK 6/35 BL	blue	100	0380580000
SAK 6/35 GN/GE	yellow	100	1866850000
SAK 6/35 KRG/BL	blue	100	0380570000
SAK 6/EN BL	blue	100	0212880000
SAK 6/EN GE	yellow	100	1772820000
SAK 6/EN OR	orange	100	1772810000
SAK 6/EN RT	red	100	0212840000
SAK 6/EN SW	black	100	0212810000
SAK 6/EN WS	white	100	1773350000
SAK 6N BL	blue	100	0193280000
SAK 10 BL	blue	100	0110080000
SAK 10 KRG/BL	blue	100	0110070000
SAK 10 OR	orange	100	0110040000
SAK 10/35 BL	blue	100	0443780000
SAK 10/35 KRG/BL	blue	100	0443770000
SAK 10/EN BL	blue	100	1784410000
SAK 10/EN GR RAL 7042	grey	100	1853960000
SAK 10/EN OR	orange	100	1772830000
SAK 10/EN SW	black	100	1773900000
SAK 16 BL	blue	50	0271080000
SAK 16/35 BL	blue	50	0380680000
SAK 16/EN BL	blue	50	1784390000
SAK 70 KRG/BL	blue	10	0340870000
SAK 95/35 KRG/BL	blue	10	0662270000
SAKC 4/2STB7 BL	blue	100	0340670000
SAKD 2.5/35 BL	blue	100	0268880000
SAKD 2.5N BL	blue	100	0215580000
SAKH 6 EP/SW	black	50	0126600000

Type	Colour	Qty	Order No.
SAKH 10 EP/SW	black	50	0126700000
SAKH 35 EP/SW	black	20	1596240000
SAKR 2STB BL	blue	100	0412280000
SAKR BL	blue	100	0412180000
SAKR OR	orange	100	1461960000
SAKR/35 2STB BL	blue	100	0183380000
SAKR/35 BL	blue	100	0172180000
SAKR/35 WS	white	100	0172190000

Potential distribution

Cross-connection systems

Cross-connections across more than 10 modular terminals

The SAKD 2.5 N, SAK 2.5, SAK 4 and SAK 6 N terminals include the option of setting up a cross-connection with more than 10 poles, e.g. 20-pole: 2 No. Q 10 + 1 No. QL 2.

The end fixing screws are removed from the Q 10 links by unscrewing them from the VH sleeves. The QL 2 is positioned between these and the two fixing screws screwed into their VH sleeves again. This arrangement allows 20 poles to be cross-connected.

Q pre-assembled cross-connectors

The pre-assembled cross-connector has the appropriate number of cross-connection links, cross-connection sleeves and fixing screws to match the number of poles required already installed in a captive arrangement. Such pre-assembled cross-connectors merely have to be inserted into the appropriate terminals during installation. These cross-connectors can be supplied in 2-, 3-, 4- and 10-pole versions.

QL cross-connection links

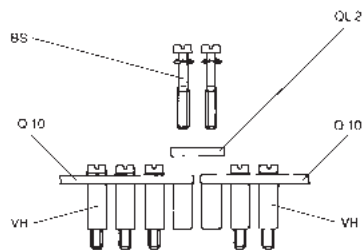
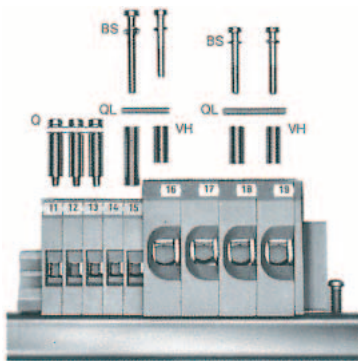
Cross-connection links are used to provide cross-connections with equal potential across several modular terminals. The cross-connection links are made from copper or brass with an electroplated tin coating, and can be supplied in lengths to suit 2, 3, 4 and 10 poles, to match the respective terminal width. The electrical connection between the cross-connection link and the busbar of the modular terminal is by way of a connecting sleeve.

BS fixing screws

A steel fixing screw is used to connect the cross-connection link to the connecting sleeve on the busbar under a modular terminal. It is the purpose of the steel screw to provide a secure mechanical fixing between the cross-connection and the busbar. Two types of screw are used: form A has a full-length thread, and form B has a plain shaft below the head with a captive washer.

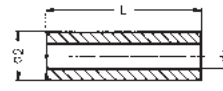
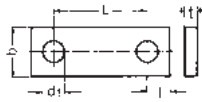
VH connecting sleeves

The length of the connecting sleeve is matched to the size of the terminal. The sleeves are made from tin-coated copper or brass. One connecting sleeve must be used for every terminal to be cross-connected.



Potential distribution

Cross-connection systems

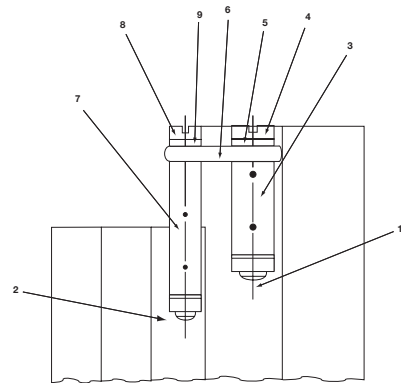
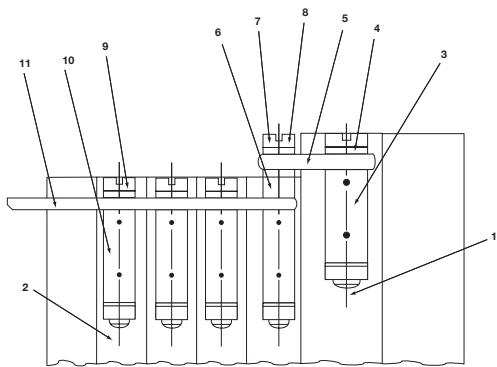


Type	Rated current of modular terminals	Pre-assembled cross-connection		Cross-connection links						Continuous current rating of cross-connection	Connecting sleeves without thread			Fixing screws						
		Type Poles	Order No.	Type Poles	Order No.	Dimensions					Type Length	Order No.	L	d2	d1	Order No.	Size Form	M		
SAK 2.5	24 A	Q 2	037000000	QL 2	015590000	6	0.6	6	3.4	2.4	32 A	VH 8	026670000	8	4.9	3.2	035900000	B	3 x15	
		Q 3	371000000	QL 3	015600000						32 A									
		Q 4	372000000	QL 4	015610000						32 A									
		Q 10	036870000	QL 10	033810000						32 A									
SAK 4	32 A	Q 2	033670000	QL 2	013060000	6	0.6	6.5	3.4	2.5	41 A	VH 13.5	024850000	13.5	5	3.2	030300000	B	3x20	
		Q 3	033680000	QL 3	013070000						41 A									
		Q 4	033690000	QL 4	013080000						41 A									
		Q 10	036880000	QL 10	033820000						36 A									
SAK 6 N	41 A	Q 2	045670000	QL 2	019430000	6	1	8	3.4	3	41 A	VH 12	024900000	12	5	3.2	030300000	B	3x20	
		Q 3	045680000	QL 3	019440000						41 A									
		Q 4	045690000	QL 4	019450000						41 A									
		Q 10	045700000	QL 10	033830000						41 A									
SAK 10	57 A	Q 2	045710000	QL 2	047030000	6	2	10	3.4	3.5	57 A	VH 12	024900000	12	5	3.2	030300000	B	3x20	
		Q 3	045720000	QL 3	047040000						57 A									
		Q 4	045730000	QL 4	047050000						57 A									
		Q 10	045740000	QL 10	047060000						57 A									
SAK 16	76 A	Q 2	045750000	QL 2	047070000	6	2	12	3.4	4	76 A	VH 12	024900000	12	5	3.2	030300000	B	3x20	
		Q 3	045760000	QL 3	047080000						76 A									
		Q 4	045770000	QL 4	047090000						76 A									
		Q 10	045780000	QL 10	047100000						76 A									
SAK 35 N	125 A			QL 2	056490000	8	3	16	4.5	5	99 A	VH 17	026700000	17	8	5	026710000	A	4x30	
				QL 3	056500000						99 A									
				QL 4	056510000						99 A									
				QL 10	056520000						99 A									
SAK 35	125 A			QL 2	012360000	8	3	18	4.5	5	99 A	VH 17	026700000	17	8	5	026710000	A	4x30	
				QL 3	012370000						99 A									
				QL 4	012380000						99 A									
				QL 10	033860000						99 A									
SAK 70	192 A			QL 2	034530000	14	4	22	5.5	7	180 A	VH 30.5	034550000	30.5	11	5.5	034560000	A	5x45	
				QL 3	016700000						180 A									
SAK 95	232 A			QL 2	055120000	14	4	28	6	7	180 A	VH 35	055110000	35	11	5.5	063020000	B	5x50	
				QL 3	040760000						180 A									
				QL 4	040770000						180 A									
SAKS 1	6,3 A			QL 2	019140000	6	2	12.9	3.4	3	47 A					346200000	B	3 x 6		
SAKS 3	10 A			QL 3	019150000															
SAKS 6	10 A			QL 4	019160000															
SAKS 7	10 A			QL 10	033880000															
SAKS 4	16 A			QL 2	032800000	10	4	24	4.8	5	47 A						019970000	A	3 x 7	
				QL 3	032810000						47 A						010330000	A	4 x 9	
				QL 4	032820000						47 A									
				QL 10	033900000						36 A									
SAKS 2	10 A			QL 2	020780000	10	4	27.6	4.8	6.5	47 A					010330000	A	4 x 9		
SAKS 5	63 A			QL 3	020790000						47 A									
				QL 4	020800000						47 A									
				QL 10	033890000						36 A									
DK 4 Q	41 A	Q 2	033640000	QL 2	029720000	4	0.8	6.1	2.8	2.5	32 A	VH 5	029680000	5	4	2.7	040010000	B	2.5x11	
DKB 4 Q/10	41 A	Q 3	033650000	QL 3	029730000						32 A									

Potential distribution

Cross-connection systems

Cross-connections between terminals of different sizes to increase the cross-section



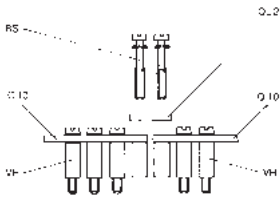
Terminal	Position	Type	Order No.	Current
from SAK 16	1	-	-	-
	3	VH 12	0249000000	-
	4	BS M 3 x 20	0303000000	-
to SAK 6 N	2	-	-	-
	5	QL 2	0470300000	-
	6	VH 4,5	0303200000	-
	7	BS M 3 x 25	0292500000	-
	8	SS M 3	0164400000	-
	9	BS M 3 x 20	0303000000	-
	10	VH 12	0249000000	-
	11	QL 2	0194300000	47 A
	11	QL 3	0194400000	47 A
	11	QL 4	0194500000	47 A
	11	QL 10	0338300000	36 A
to SAK 2.5	2	-	-	-
	5	QL 2	0470300000	-
	6	VH 12	0249000000	-
	7	BS M 3 x 30	0296200000	-
	8	SS M 3	0164400000	-
	9	BS M 3 x 15	0359000000	-
	3	VH 12.5	0308000000	-
	3	VH 8	0266700000	-
	11	QL 2	0155900000	27 A
	11	QL 3	0156000000	27 A
	11	QL 4	0156100000	27 A
	11	QL 10	0338100000	27 A
from SAK 10	1	-	-	-
	4	BS M 3 x 20	0303000000	-
to SAK 4	2	-	-	-
	3	VH 13.5	0248500000	-
	5	QL 2	1443000000	-
	7	BS M 3 x 20	0303000000	-
	9	BS M 3 x 20	0303000000	-
	10	VH 13.5	0248500000	-
	11	QL 2	0130600000	36 A
	11	QL 3	0130070000	36 A
	11	QL 4	0130800000	36 A
	11	QL 10	0338200000	36 A
to SAK 2.5	2	-	-	-
	5	QL 2	0193400000	36 A
	1	VH 13	0304000000	-
	4 + 7	BS M 3 x 20	0303000000	-
	9	BS M 3 x 15	0359000000	-
	10	VH 8	0266700000	-
	11	QL 2	0155900000	27 A
	11	QL 3	0156000000	27 A
	11	QL 4	0156100000	27 A
	11	QL 10	0338100000	27 A
	3	VH 13	0304000000	-
	3	VH 6.5	0286400000	-

Terminal	Position	Type	Order No.	Current
from SAK 35	1	-	-	-
	3	VH 17	0267000000	-
	4	BS M 4 x 30	0267100000	-
	5	SS M 4	0136400000	-
to SAK 10 N	2	-	-	-
	5	QL 2	0207400000	47 A
	6	VH 4,5	0303200000	-
	8	BS M 3 x 35	0309800000	-
	9	SS M 3	0164400000	-
to SAK 6 N	2	-	-	-
	6	QL 2	0207400000	47 A
	7	VH 27	0309400000	-
	8	BS M 3 x 35	0309800000	-
	9	SS M 3	0164400000	-
from SAK 35 N	1	-	-	-
	3	VH 17	0267000000	-
	4	BS M 4 x 30	0267100000	-
	5	SS M 4	0136400000	-
to SAK 10	2	-	-	-
	6	QL 2	0207400000	47 A
	7	VH 27	0309400000	-
	8	BS M 3 x 35	0309800000	-
	9	SS M 3	0164400000	-
to SAK 6 N	2	-	-	-
	6	QL 2	0135500000	47 A
	7	VH 27	0309400000	-
	8	BS M 3 x 35	0309800000	-
	9	SS M 3	0164400000	-
from SAK 10	1	-	-	-
	3	VH 12.5	0300800000	-
	4	BS M 3 x 20	0303000000	-
	5	SS M 3	included	-
to SAK 35 N	1	-	-	-
	3	VH 13	0304000000	-
	4	BS M 3 x 20	0303000000	-
	5	SS M 3	included	-
to SAK 2.5	2	-	-	-
	6	QL 2	0130600000	27 A
	7	VH 16	0309700000	-
	8	BS M 3 x 20	0303000000	-
	9	SS M 3	included	-

Potential distribution

Screw-in cross-connectors (Q)

In this type of cross-connection the cross-connection link, connecting sleeves and fixing screws are pre-assembled in a captive arrangement. However, all the individual parts are also available separately on request. During installation, these pre-assembled cross-connectors are simply inserted into the cross-connection slot in the middle of the terminal and screwed tight. Any number of poles can be achieved by linking two cross-connections. For example, a 20-pole cross-connection by joining together two 10-pole cross-connections with the cross-connection link of a 2-pole cross-connection (see figure below).



Technical specification

continuous current, 2-pole/multi-pole	A
thread size	
tightening torque	Nm

Ordering data

2-pole	
3-pole	
4-pole	
10-pole	
24-pole	

Q ... AKZ 4SS



Technical specification

continuous current, 2-pole/multi-pole	32 / 32
thread size	M 2.5
tightening torque	0.4 ... 0.6

Ordering data

Type	Qty	Order No.
Q...2 AKZ 4SS		0369000000
Q...3 AKZ 4SS		0369100000
Q...4 AKZ 4SS		0369200000
Q...10 AKZ 4SS		0369300000

for terminal

AKZ 4SS

Q ... DLI 2.5



Technical specification

continuous current, 2-pole/multi-pole	24 / 24
thread size	M 2.5
tightening torque	0.4 ... 0.6

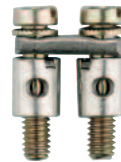
Ordering data

Type	Qty	Order No.
Q...2 DLI 2.5		1312500000
Q...3 DLI 2.5		1312600000
Q...4 DLI 2.5		1312700000
Q...10 DLI 2.5		1313100000

for terminal

DLI 2.5
DLA 2.5
DLD 2.5

Q ... AKZ 1.5



Technical specification

continuous current, 2-pole/multi-pole	A
thread size	
tightening torque	Nm

Ordering data

2-pole	
3-pole	
4-pole	
10-pole	
24-pole	

Technical specification

continuous current, 2-pole/multi-pole	24 / 24
thread size	M 2.5
tightening torque	0.4 ... 0.6

Ordering data

Type	Qty	Order No.
Q...2 AKZ 1.5	50	0368200000
Q...3 AKZ 1.5	50	0368300000
Q...4 AKZ 1.5	50	0368400000
Q...10 AKZ 1.5	20	0368500000

for terminal

AKZ 1.5
AKZ 2.5

Q ... AKZ 4



Technical specification

continuous current, 2-pole/multi-pole	32 / 32
thread size	M 2.5
tightening torque	0.4 ... 0.6

Ordering data

Type	Qty	Order No.
Q...2 AKZ 4	50	0336400000
Q...3 AKZ 4	50	0336500000
Q...4 AKZ 4	50	0336600000
Q...10 AKZ 4	20	0338600000

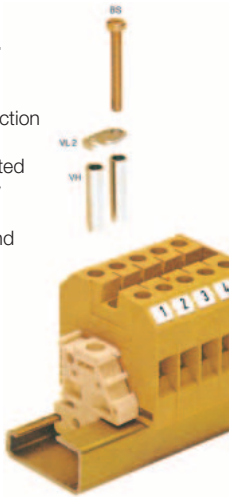
for terminal

AKZ 4

Potential distribution

Removable cross-connection links

Removable cross-connection links are intended for 2-pole, easily disconnected cross-connections. They are fitted together with a VH connecting sleeve and a BS fixing screw.



VL 2

Removable cross-connection links



for terminal
SAK 4
SAK 6 N
SAK 10
SAK 16
SAK 35

Type	Qty	Order No.
VL 2	50	0197000000
VL 2	50	0194700000
VL 2	50	0135900000
VL 2	50	0135800000
VL 2	50	0124000000

VH

Connecting sleeves



Type	Qty	Order No.
VH 19	50	0285100000
VH 19	50	0285100000
VH 19	50	0285100000
VH 19	50	0285100000
VH 24,5	50	0298700000

BS

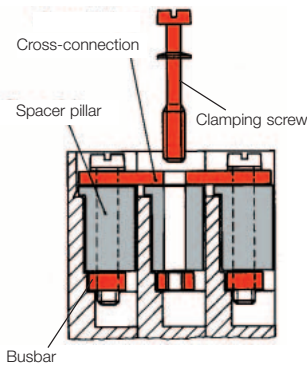
Fixing screws



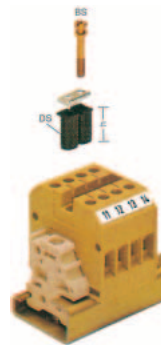
Type	Qty	Order No.
BS M3x25	100	0292500000
BS M3x25	100	0292500000
BS M3x25	100	0292500000
BS M3x25	100	0292500000
BS M4x35	50	0298900000

Spacer pillars

The DS spacer pillars are made from a tempered insulating material and are used so that individual current paths can be disconnected by removing the fixing screw. The current in the cross-connection is fed via the fixing screw in this arrangement. Therefore, we prescribe the use of screws made from CuNi 60 (a copper-nickel alloy). The use of an end bracket with a screw holder avoids losing fixing screws that have been removed.



Spacer pillars type DS



for terminal
SAK 2.5
SAK 4
SAK 6 N
SAK 10 and SAK 16

Type	Qty	Order No.
DS 9*	100	0330930000
BS M3x15 CuNi	100	0377200000
DS 14*	100	0207530000
BS M3x20 CuNi	100	0377100000
DS 12,5*	100	0207730000
BS M3x20 CuNi	100	0377100000
DS 12,5*	100	0207630000
BS M3x20 CuNi	100	0377100000
* Height in mm		

EW 35

End bracket for TS 35 with screw holder for fixing screws that have been removed.



Type	Qty	Order No.
EW35/TS 35 20 with screw holder	100	0258660000

EWK 2

End bracket for TS 32 with screw holder for fixing screws that have been removed.



Type	Qty	Order No.
EWK 2/TS 32 20 with screw holder	100	0258760000

Rail holder

For an insulated terminal rail arrangement in fully insulated installations.

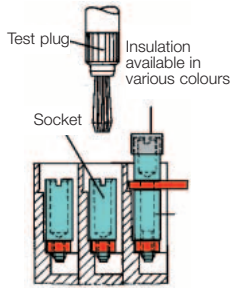


for terminal
EK 2.5 N, EK 2.5/35, EK 4, EK 4/35, EK 6/35, EK 10, EK 10/35, EK 16, EK 16/35, EK 35, EK 35/35

Type	Qty	Order No.
SH2	10	0494920000

Testing/Checking

Test plugs/Sockets



Test plugs (PS) are used for measurement purposes or for the final checking of a finished terminal strip installation. Test plugs for sockets are available with 2.3 and 4 mm I.D.

The difference between these and a test adapter is that the test plug does not automatically clip into the terminal. This means that a secure connection to modular feed-through terminals up to 35 mm² is only possible in conjunction with a socket.

The **sockets (StB)** enable the PS test plug and the QS plug-in cross-connectors to be plugged in. The sockets are screwed into the busbar in the cross-connection slot in the middle of the terminal or screwed into the modular terminal instead of the clamping screw.

If a cross-connection has to provide a test option as well, then an StB 28.5 or 30.5, which has an insulating sleeve and can accommodate the PS 4 test plug, is screwed in instead of the fixing screw.

PS



Type	Qty	Ordner No.
2.3 mm dia./rated current 17.5 A PS 2.3	20	0180400000
4.0 mm dia./rated current 24 A PS 4	20	0299600000

PS 2 / PS 2 MC



Type	Qty	Ordner No.
PS 2 for 2 mm dia. sockets for soldered conductor cross-section 1.5 mm ²	20	0293800000
PS 2 MC for soldered conductor cross-section 0.75 mm ² , can also be plugged directly into threaded hole in busbar for terminal types AKZ 4, AKB 4, AKZ 2.5, AKZ 1.5	20	0310000000

ZS 2.3/4



Type	Qty	Ordner No.
ZS 2.3/4 Adapter plug for connecting sockets with 2.3 and 4 mm I.D. Can also be plugged directly into threaded hole in busbar for terminal types SAK 2.5 and SAK 4.	20	0249600000

FZS 2/4 / FK 4



Type	Qty	Ordner No.
FZS 2/4 Flexible adapter plug for connecting sockets with 2.3 and 4 mm I.D.	20	1276300000
FK 4 Flexible coupling for connecting test plug to test adapter. The unconnected end of the conductor is protected against fraying by a wire end ferrule.	20	1678650000

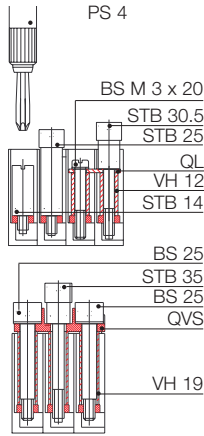
TA 1



Type	Qty	Ordner No.
TA 1 The conductor is soldered on, or crimped on with the HTG 58 crimping pliers.	20	0535860000
HTG 58 conductor: max. 0.75 mm ² remove shoulder stripping length: 14 mm	1	9012000000

Testing/Checking

The SAKR modular disconnect terminals are available already fitted with sockets (see "Modular disconnect terminals"). These sockets are provided with a slot for actuating with a screwdriver. Weidmüller can supply special screwdrivers with a shoulder for this purpose (chapter J).

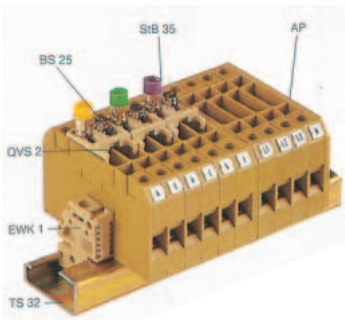


StB for SAKT

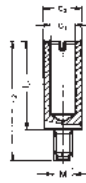
The type StB 25 socket accepts test plug PS 4 in type SAKT 1 and SAKT 2 disconnect terminals, or the QS plug-in cross connector.

The type StB 35 socket is used when simultaneous testing is necessary with a QVS cross-connection slider.

Complete with insulating sleeve to prevent contact with live parts and colour-coded test plug and plug-in cross-connection, 4 mm dia.

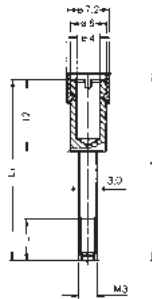


StB 5.5...17



Type	for terminal type	L1	L2	d1	d2	M	Qty	Order No.
StB 5.5	SAKL 4/20 ¹⁾	5.5	11	2.3	3.7	3	100	0122700000
StB 6	AKZ 4, DK 4, SAKR ¹⁾	6	11.5	2.3	3.9	3	100	0379400000
StB 6	SAK 2.5 ¹⁾	6	13	2.3	3.9	2.5	50	0130200000
StB 7	SAKC4, SAK4 ¹⁾	7	14.5	2.3	4	3	100	0358500000
StB 7.5	SAK 10, SAKB 10 ¹⁾	7.5	17	4	6	4	50	0130000000
StB 8.5	AKZ 4 / DK 4 / SAKD 2.5 N	8.5	11.5	2.3	4	2.5	50	0215700000
StB 8.5	SAK 2.5	8.5	12	2.3	5	3	50	0280600000
StB 8.5	SAKT 4	8.5	12	2	4.5	3	50	0244600000
StB 13.5	SAKA 10 / SAKC 10	13.5	18.5	4	6	4	50	0135200000
StB 14	SAK 4	14	17.5	2.3	5	3	50	0168600000
StB 14	SAK6N, 10, 16 / SAKT 1, SAKT 2	14	19	4	6	3	50	0169900000
StB 16	SAK70, SAK 95	16	28	4	7	5	50	0385400000
StB 16	SAK 35, SAKB 10	16	23	4	7	4	50	0140200000
StB 17	SAKC 10	17	22	4	6	4	50	0147100000

StB 28.5 / 30.5



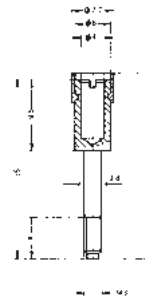
Type	Colour	terminal type	L1	L2	L	Qty	Order No.
StB 30.5	black	SAK 4, SAK 6 N	30.5	31.7	7	50	0341000000
StB 30.5	grey	SAK 10, SAK 16	-	-	-	50	0341100000
StB 30.5	blue	-	-	-	-	50	0341200000
StB 30.5	red	-	-	-	-	50	0341300000
StB 30.5	green	-	-	-	-	50	0341400000
StB 30.5	yellow	-	-	-	-	50	0341500000
StB 30.5	violet	-	-	-	-	50	0341600000
StB 28.5	black	SAK 2.5	28.5	29.7	9	50	0133400000

StB 25



Type	Colour	for terminal type	Qty	Order No.
StB 25	yellow	SAKT 1 and SAKT 2	50	0267200000
	green		50	0271200000
	violet		50	0271300000
	black		50	0271500000
	grey		50	0271400000
	blue		50	0343400000
	red		50	0343300000

StB 35



Type	Colour	for terminal type	Qty	Order No.
StB 35	yellow	SAKT 1 and SAKT 2	50	0389000000
	green		50	0388900000
	violet		50	0389100000
	black		50	0388500000
	grey		50	0388600000
	blue		50	0388700000
	red		50	0388800000

¹⁾ used instead of the clamping screw

Protective covers

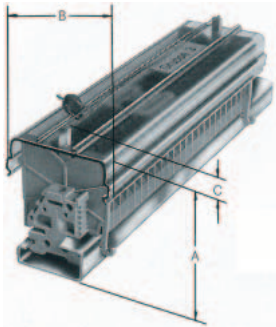
Protective covers

Several safety regulations, e.g. the German accident prevention code covering electrical systems and equipment (VBG 4) or the standard VDE 0106 part 100 (March 1983), call for live parts of electrical systems to be protected against direct contact by any part of the body.

In the case of modular terminals this protection must always be provided in the form of additional covers when cross-connectors or test sockets are fitted. Therefore, Weidmüller can supply cover strips with associated retaining plates which can be used with the more common sizes of terminal. The retaining plates can be fitted at the ends or within the terminal strip, and can be fitted to TS 32, TS 35 or TS 15 terminal rails.

Spacing of retaining plates:

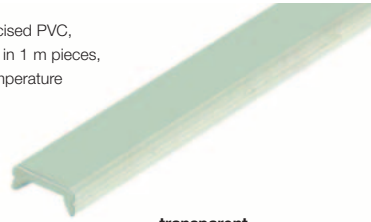
The length of the ADP 1, 2 and 3 between retaining plates should not exceed about 500 mm. The cover strip is clipped into tabs on the side. Additional security is provided by a spigot on the retaining plate, which can also be sealed with lead. On terminal type SAK 95 the ADP 3 cover strip can be clipped directly onto the terminal. Transparent cover strips enable the terminals with their accessories and labelling to remain visible at all times. Additional labelling, e.g. for groups, can be added.



ADP

Cover strips

Unplasticised PVC, supplied in 1 m pieces, max. temperature 70°C



transparent	
Type	Order No.
ADP 1	0485200000
ADP 2	0485300000
ADP 3	0485400000

grey	
Type	Order No.
ADP 4 (1000 mm)	1430760000
ADP 4 (300 mm)	1378160000
TSK 31.5	0347960000

HP

Retaining plates

PA 66, 2 mm thick



For fitting to TS 35 and TS 32, with spigot for lead seal	
Type	Order No.
HP 1	0485560000
HP 2	0485660000
HP 3	0485760000
HP 4	0485860000

For fitting to TS 15	
Type	Order No.
HP 7	0258260000
HP 8	0258360000

Overall dimensions	A	A	A	A	B	C
for mounting on terminal rail	TS 32	TS 35 x 7.5	TS 35 x 15	TS 15		
ADP 1, HP 1	61	56	63		49	6
ADP 2, HP 2	77	72	79		62.5	6
ADP 3, HP 3	94	89	86		92	6
ADP 3, HP 4	73.5	68.5	75.5		92	6
ADP 1, HP 8				45	49	6
TSK 31.5, HP 7				35	31	6

Labelling material	Qty	Order No.
"Lightning flash" symbol, self-adhesive, 20 labels per card	5	0566700000

* only for PA 66 versions

Allocation to some terminal types	ADP cover strips			HP retaining plates		
	Type	Qty	Order No.	Type	Qty	Order No.
SAKD 2.5 N, EK 2.5 N, SAK 2.5, SAK 2.5/35	ADP 1	36	0485200000	HP 1	20	0485560000
SAK 4, EK 4, SAK 4/35, EK 2.5/35, EK 4/35	ADP 2	36	0485300000	HP 2	20	0485660000
SAK 6 N, EK 10, SAK 10, EK 6/35, SAK 6/35, EK 10/35						
SAKR, SAKR-D, DK 4						
SAK 16, EK 16, EK 35, SAK 35, SAKC 4, SAK 16/35	ADP 3	20	0485400000	HP 3	20	0485760000
SAKC 10, SAK 70, SAKS 1, SAKS 2, Sak 35/35, SAK 70/35						
SAKS 3, SAKS 4, SAKS 5						
SAK 95	ADP 3	1	0485400000	not applicable		
ASK 1, SAKA 10, SAKT 1, SAKB 10, SAKT 2,	ADP 3	1	0485400000	HP 4	20	0485860000
AST*, SAK 2.5, SAK 4	ADP 4	1	1430760000	not applicable		
	ADP 1	1	0485200000	HP 8	20	0258360000
1000 mm long	ADP 4	1	1430760000	not applicable		
300 mm long	ADP 4	10	1378160000			
	TSK 31.5	1	0347960000	HP 7	20	0258260000

Protective covers

Several German VDE standards, e.g. VDE 0106 part 100 (March 1983), specify that mains terminals must be covered. Weidmüller can supply a range of such covers printed with a warning "lightning flash" and the international warning symbol. The other side features a "lightning flash" symbol with the warning "Danger! Electricity". Plastic screws are used to fix the cover plates to the terminal strips. The cover plates are intended for 3- or 4-pole terminals.

Type BSK plastic screws are used to fix the plates.
BSK = PA 66

AD/WAD covers



AD 3 (3-pole)

Terminal type	Terminal width (mm)	Qty	Order No.	Screw	Qty	Order No.
SAK 2.5	6	50	0297900000	M 3 x 22	100	0128900000
AKZ 4	6	50	0297900000	M 2.5 x 18	100	0303300000
DK 4 Q	6	50	0297900000	M 2.5 x 18	100	0303300000
SAK 4	6.5	50	0297600000	M 3 x 22	100	0128900000
SAK 6 N	8	50	0297700000	M 3 x 22	100	0128900000
SAK 10	10	50	0178500000	M 3 x 22	100	0128900000
SAK 16	12	50	0297800000	M 3 x 22	100	0128900000
SAK 35 N	18	50	0273400000	M 4 x 32	100	0129100000
SAK 70	22	10	0344300000	M 5 x 45	50	0344400000
Screw for lead seal				M 3 x 20	100	0451300000

AD 3 (4-pole)

SAK 2.5	6	50	0303400000	M 3 x 22	100	0128900000
AKZ 4	6	50	0303400000	M 2.5 x 18	100	0303300000
DK 4 Q	6	50	0303400000	M 2.5 x 18	100	0303300000
SAK 4	6.5	50	0285300000	M 3 x 22	100	0128900000
SAK 6 N	8	50	0196600000	M 3 x 22	100	0128900000
SAK 10	10	50	0178600000	M 3 x 22	100	0128900000
SAK 16	12	50	0518200000	M 3 x 22	100	0128900000
SAK 35	18	50	0178700000	M 4 x 32	100	0129100000
SAK 35 N	16	50	0576700000	M 4 x 32	100	0129100000
Screw for lead seal				M 3 x 20	100	0451300000

TBS 2 / BST 2

for the SAK series

Protective covers

Details

Details

- For covering uninsulated cross-connections on SAK 2.5...SAK 16 terminals.
- Identification of functional groups.
- Easily fitted by inserting the insulating plate into the existing insulating plate slot in the terminal.
- Labelling strips are clipped into the insulating plates.
- Labelling of stable labelling strip with felt-tip pen for permanent labelling or pencil for temporary labelling.



	Order No.
Materials	
Type	
TBS 2, polyamide	
BST 2, unplasticised PVC	
Ordering data	
Type	
TBS insulating plate	1287860000
BST 2 labelling strip (300 mm long)	1287700000

AD

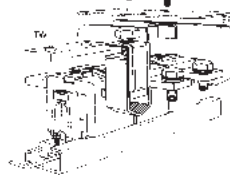
for SAKG

Cover plates

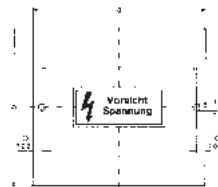
These can be assembled either with two end clamp plates or with one end clamp plate and one partition plate plus mounting bracket.

Cover plates with self-adhesive label

Dimensions of cover plates



2 mm thick



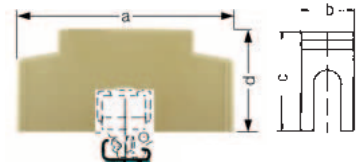
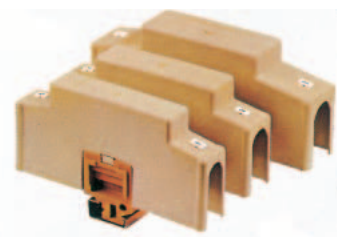
	Type	a	b	c	Order No.
for SAKG 28	AD 3	89	120	74	-
for SAKG 28	AD 4	116	120	102	0263100000
for SAKG 32 and 70	AD 4	132	120	118	0283100000
for SAKG 40	AD 3	124	160	110	-
for SAKG 40	AD 4	164	160	150	0263200000
for SAKG 46	AD 4	188	160	174	0263300000
for SAKG 54	AD 3	166	160	152	0264900000
for SAKG 54	AD 4	220	160	206	0261100000

AH

for SAKG

Shrouding covers

For open-type terminals like type SAKG. Shrouding covers are used – instead of other cover types – to provide the necessary protection against contact (required by German standard VBG 4). Shrouding covers are simply placed over the terminals.



	Type	a	b	c	d	Order No.
dimensions in mm						
for SAKG 28	AH 28	156	26	74	94	0326660000
for SAKG 32/70	AH 32	156	30	74	94	0326760000
for SAKG 40	AH 40	186	38	78	94	0326860000
for SAKG 46	AH 46	196	46	78	94	0326960000

Protective covers

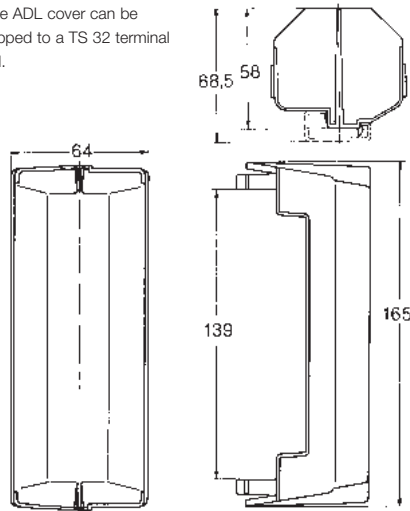
Cover strips for terminal strips

To protect against contact, dust and moisture, Weidmüller can supply cover strips which, for example, are useful in signal or lighting mast distribution boards.

Weidmüller can supply fully assembled and labelled terminal strips to meet your specification.

ADL

The ADL cover can be clipped to a TS 32 terminal rail.



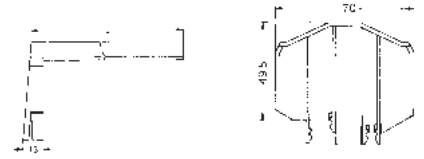
A selection of terminal types that can be fitted below this cover strip:

TS 32

- SAKD 2.5 N ... SAK 10
- EK 2.5 N ... EK 10
- SAKR, ASK 1, SAKT 1, SAKT 4, SAKB 10
- SAKS 1, SAKS 3

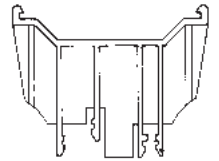
Type	Qty	Ordner No.
ADL	2	0210800000

AD 250



HP

retaining plate suitable for TS 32 and TS 35 x 7.5
height for TS 32: 64.5 mm
height for TS 35 x 7.5: 63 mm



A selection of terminal types that can be fitted below this cover strip:

TS 32

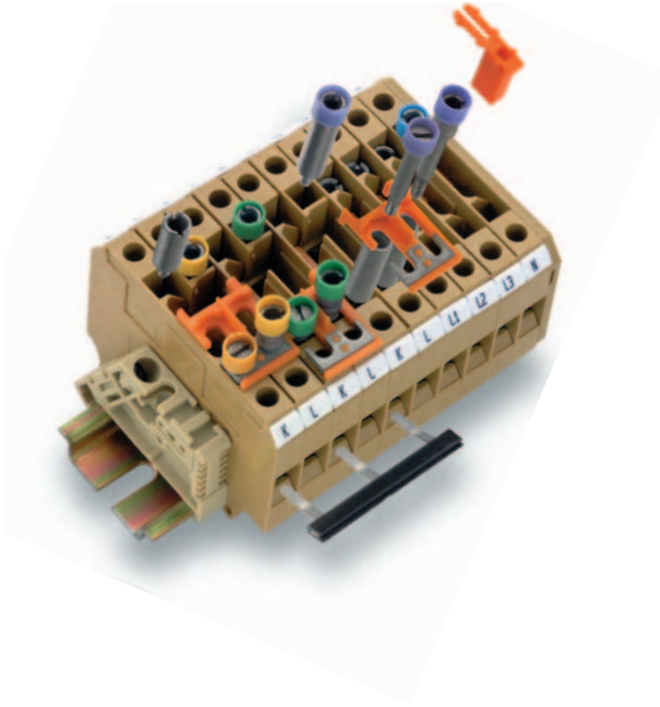
- SAKD 2.5 N ... SAK 10
- EK 2.5 ... EK 10
- SAKR, ASK 1, SAKT 1, SAKB 10
- SAKS 1, SAKS 3

TS 35

- WDU 2.5 bis WDU 10
- WPE 2.5 bis WPE 10
- WNT 2.5 bis WNT 10
- ASK 1,
- SAKS 1/35, SAKS 3/35

Type	Qty	Ordner No.
AD 250 L = 250 mm	1	0634100000
HP EK1 32/2 AD 250	1	0634300000

Accessories for modular disconnect test terminals



QVS... cross-connection sliders

VH 19 connecting sleeves and BS 25 fixing screws (or StB 35 sockets) are required for fixing the QVS cross-connections to the individual terminals.

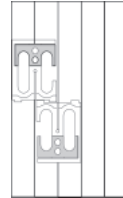
The fixing screws include an insulating sleeve for colour coding purposes and a guide for the screwdriver. The cross-connection sliders are designed so that the test plug sockets in the terminals remain accessible in every position.

The type QVS 2S 2-pole version is designed so that it can be slid even when a test plug has been inserted. If a test option is required when a QVS has been fitted, the fixing is best achieved with the StB 35 socket.

The clearance and creepage values required for the rated voltage of the terminal change when accessories are fitted.

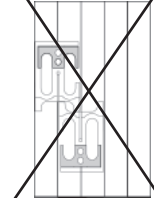
StB sockets are screwed into the busbar for the modular terminals. They are used to accommodate PS 4 test plugs or QS 2 plug-in cross-connectors.

QVSK 2 (167036)



SAKT2, SAKT1

QVS 2 (030730)



SAKT1

Note:

QVS 2 units cannot be switched when installed like this.

Rated voltages

for adjacent	rated voltage	for adjacent	rated voltage
QVS	63 V	StB 25	63 V
QL	250 V	StB 35	63 V

QVS 1

Cross-connection sliders



QVS QVS QVSK 2 QVS 2S

STB

Sockets



TW partition plates or TSch insulating plates must be used to maintain the rated voltage.

The **SSP 3** and **SSP 4** prevent the unintended making or breaking of circuits. They lock the disconnection slider in its respective position. The lockout device can be easily pressed from above into the terminal and is then only removable with a tool.

Type	Qty	Order No.
SSP 3	100	0531760000
SSP 4	20	1319360000

Type	No. of poles	Qty	Order No.
QVS 2	2 poles	20	0307300000
QVSK 2	2 poles	20	1670360000
QVS 3	3 poles	20	0329300000
QVS 4	4 poles	20	0307400000
QVS 2S	2 poles	20	0358460000

Type	Colour	Qty	Order No.
STB 14		50	0169900000
STB 25			
STB 25	yellow	50	0267200000
STB 25	green	50	0271200000
STB 25	violet	50	0271300000
STB 25	black	50	0271500000
STB 25	grey	50	0271400000
STB 25	blue	50	0343400000
STB 25	red	50	0343300000
STB 30.5			
STB 30.5	yellow	50	0341500000
STB 30.5	green	50	0341400000
STB 30.5	violet	50	0341600000
STB 30.5	black	50	0341000000
STB 30.5	grey	50	0341100000
STB 30.5	blue	50	0341200000
STB 30.5	red	50	0341300000
STB 35			
STB 35	yellow	50	0389000000
STB 35	green	50	0388900000
STB 35	violet	50	0389100000
STB 35	black	50	0388500000
STB 35	grey	50	0388600000
STB 35	blue	50	0388700000
STB 35	red	50	0388800000

Accessories for modular disconnect test terminals

BS fixing screws

VH connecting sleeves

QL cross-connections

The QL cross-connections enable connections between adjacent modular terminals.

QL cross-connection links

QL cross-connection links are used as permanent, i.e. non-switchable, cross-connections on SAKT disconnect terminals. VH 12 connecting sleeves and BS M3 x 20 fixing screws (or StB 30.5 sockets) are required for fixing these in position. The clearance and creepage values required for the rated voltage of the terminal can change when accessories are fitted. This is especially true with cross-connections between neighbouring terminals with different potentials.

QB cross-connection comb

The QB can be inserted from above on the SAKT1/QT1 cross-connect/disconnect terminal. The connection or disconnection is then achieved by means of the integral disconnection slider.

QS 2 plug-in cross-connection

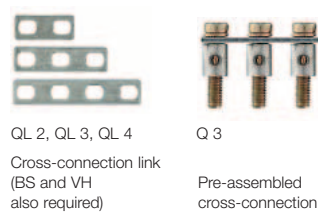
For 4 mm dia. sockets, for up to 44 A.

BS / VH



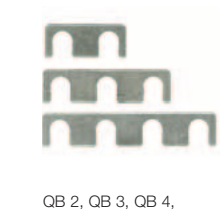
Type	Colour	Qty	Order No.
Fixing screws			
BS 25	yellow	50	0335700000
BS 25	green	50	0335600000
BS 25	violet	50	0335800000
BS 25	black	50	0335200000
BS 25	grey	50	0335300000
BS 25	blue	50	0335400000
BS 25	red	50	0335500000
BS 25	uninsulated	50	0334700000
BS M 3 x 20		100	0377100000
CuNi 60 (copper alloy)			
Connecting sleeves			
VH 12		100	0249000000
E-Cu 57 (copper alloy)			
VH 19		50	0318000000
CuZn 39 (brass alloy)			

QL / Q



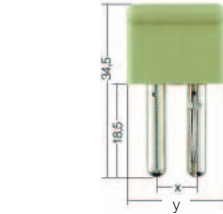
Type	No. of poles	Qty	Order No.
Cross-connection link (BS and VH also required)			
QL 2, QL 3, QL 4			
QL 2	2 poles	50	0194300000
QL 3	3 poles	50	0194400000
QL 4	4 poles	50	0194500000
QL 5	5 poles	50	0220500000
QL 6	6 poles	50	0220600000
QL 10	10 poles	20	0338300000
QL 15	15 poles	10	0221200000
E-Cu 57 (copper alloy)			
Q2	2 poles	50	0456700000
Q3	3 poles	50	0456800000
Q4	4 poles	50	0456900000
Q10	10 poles	20	0457000000

QB



Type	No. of poles	Qty	Order No.
QB 2, QB 3, QB 4,			
QB 2	2 poles	50	0205700000
QB 3	3 poles	50	0205800000
QB 4	4 poles	50	0205900000
QB 10	10 poles	20	0343800000

QS 2



Type	No. of poles	Qty	Order No.
WQV			
QS 2	2 poles	20	0270960000
x = 8 mm, y = 16 mm			
QS 2	2 poles	20	0270860000
x = 10 mm, y = 20 mm			
QS 2	2 poles	20	0270760000
x = 12 mm, y = 20 mm			

